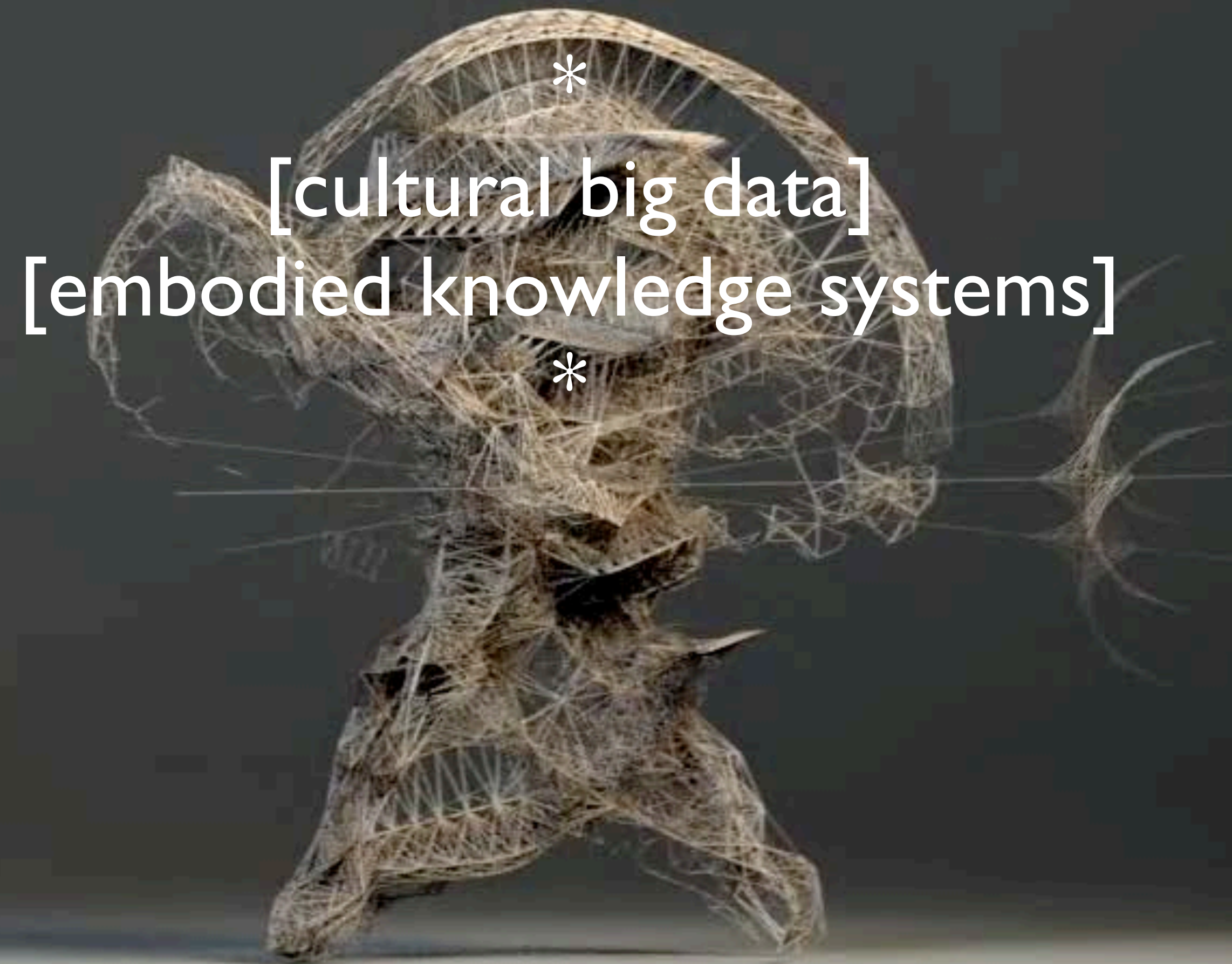


Computational Museology



EPFL

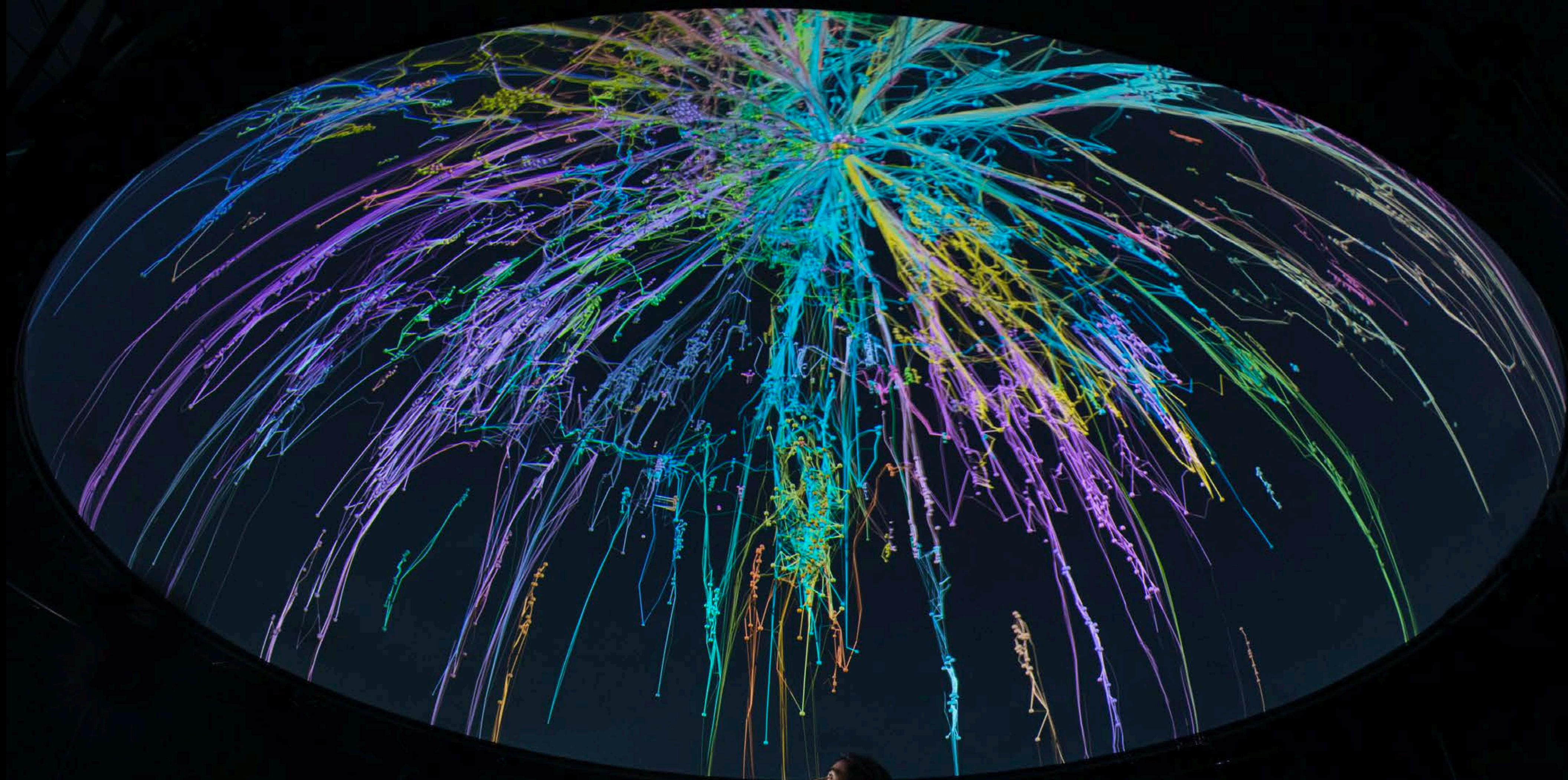
**Experimental
Museology**



A white statue of a woman, possibly a classical figure, is shown from the chest up. She is holding a large, yellow, arrow-shaped sign that points to the right. The sign has bold black text and two large red dollar signs. The background is dark with several out-of-focus lights.

\$ WE BUY DATA \$
HIGHEST PRICES PAID

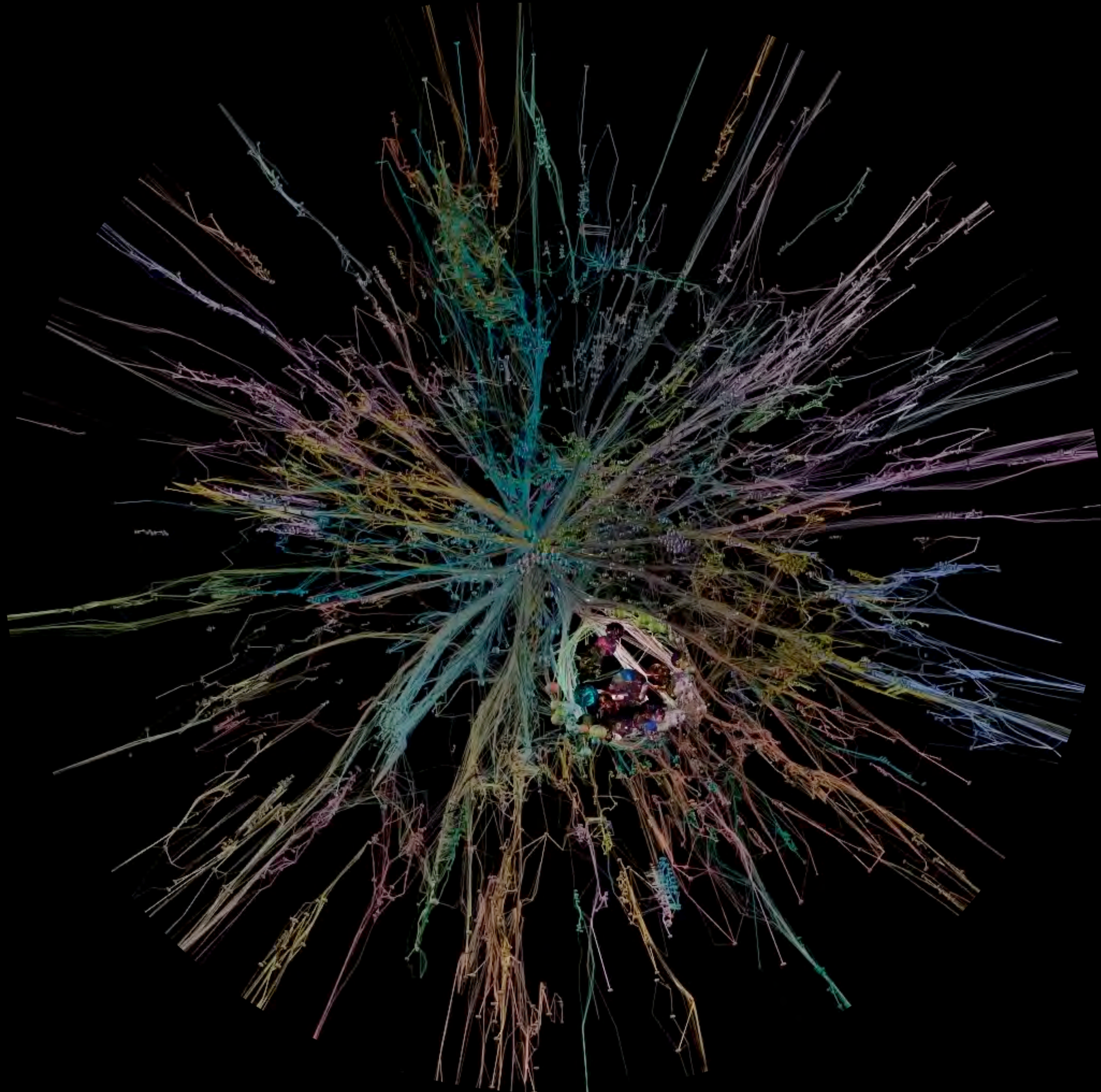
[cultural big data]



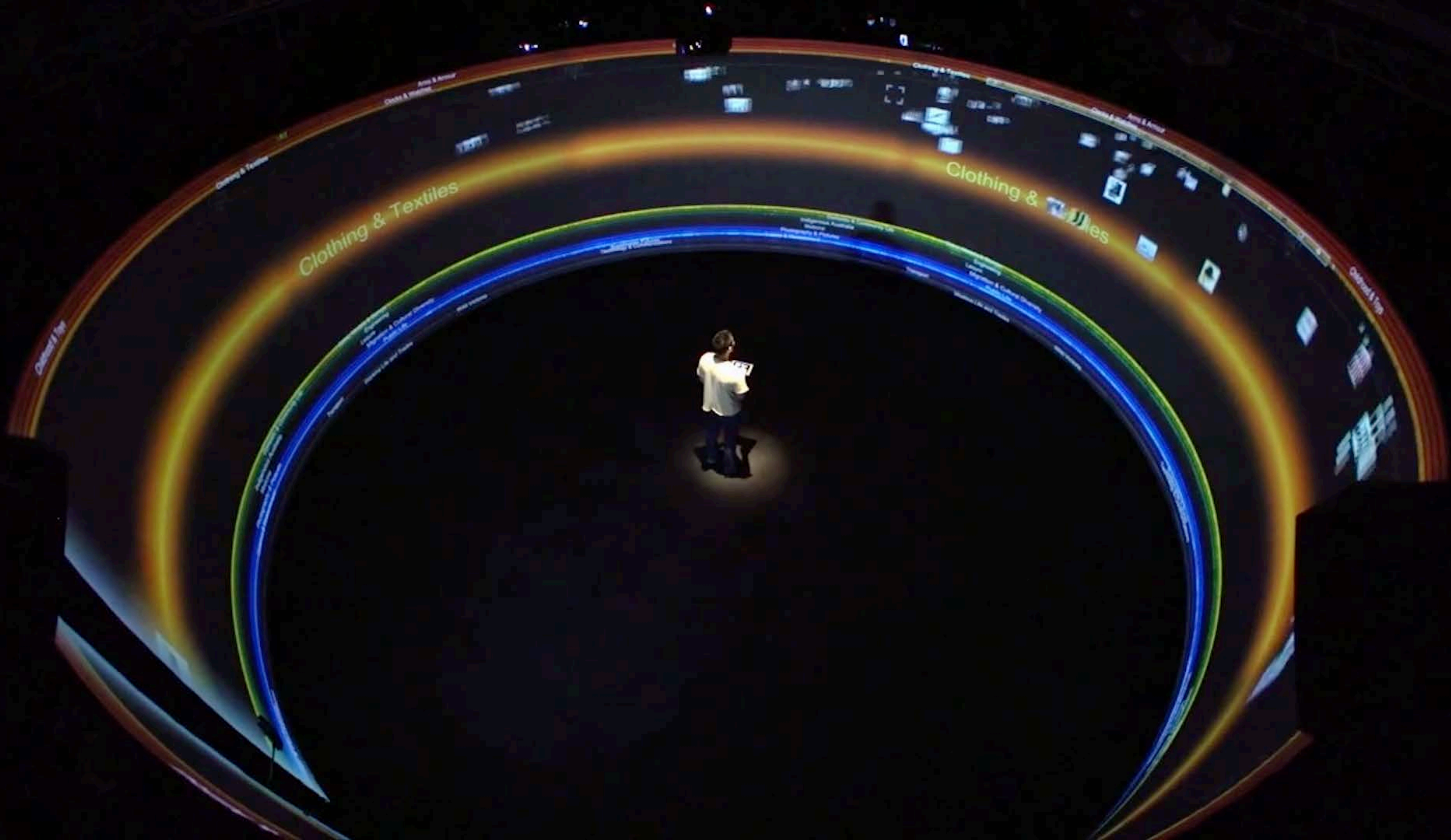
JAZZ LUMINARIES 2019







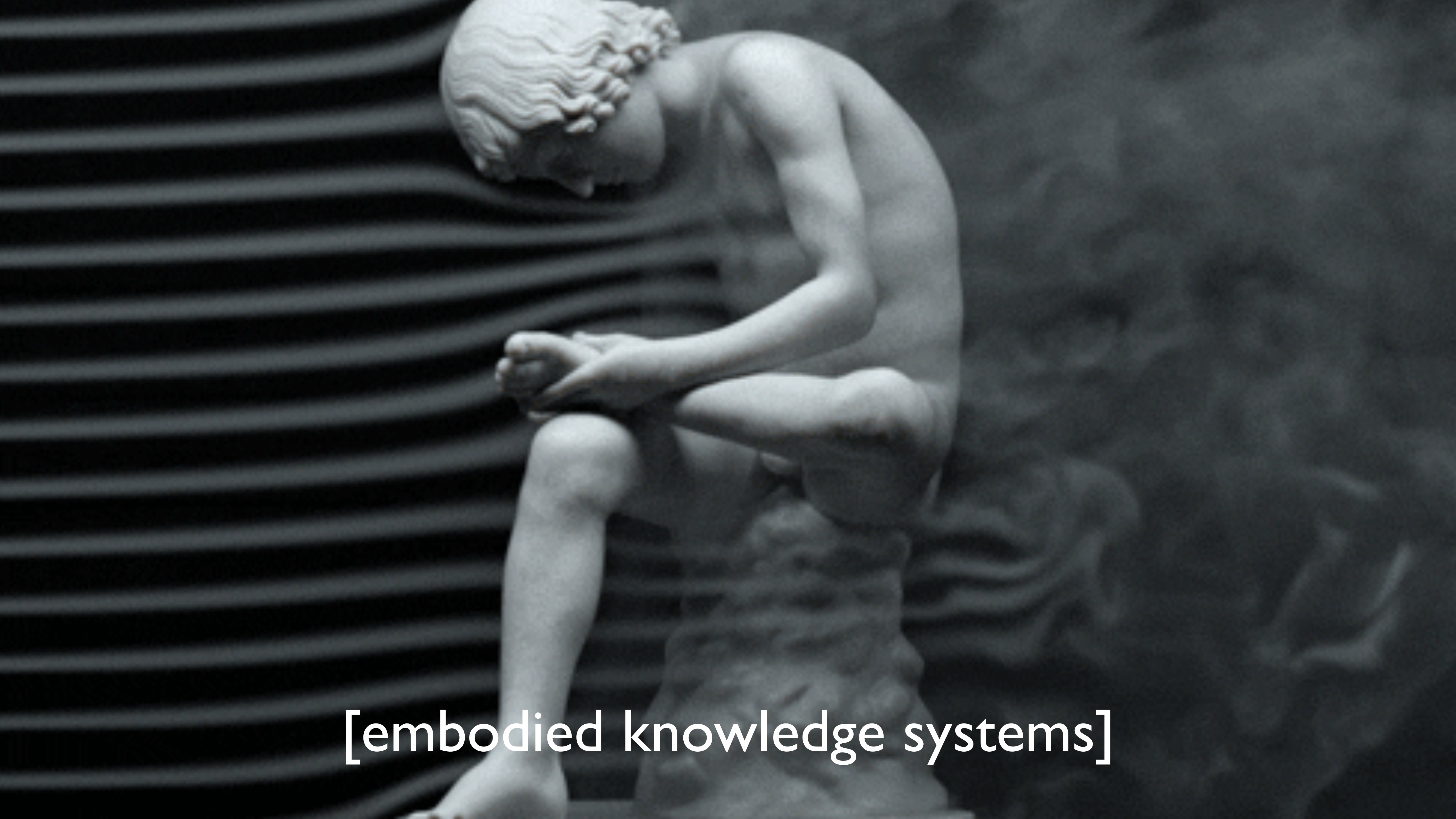




Clothing & Textiles

Clothing & Textiles





[embodied knowledge systems]



Hong Kong Martial Arts Living Archive 2012—ongoing



福

林

林祖
虎鶴

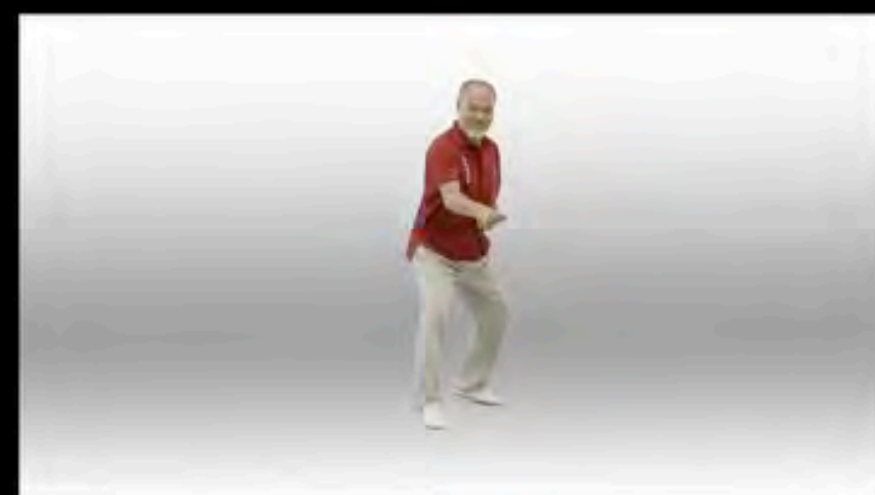
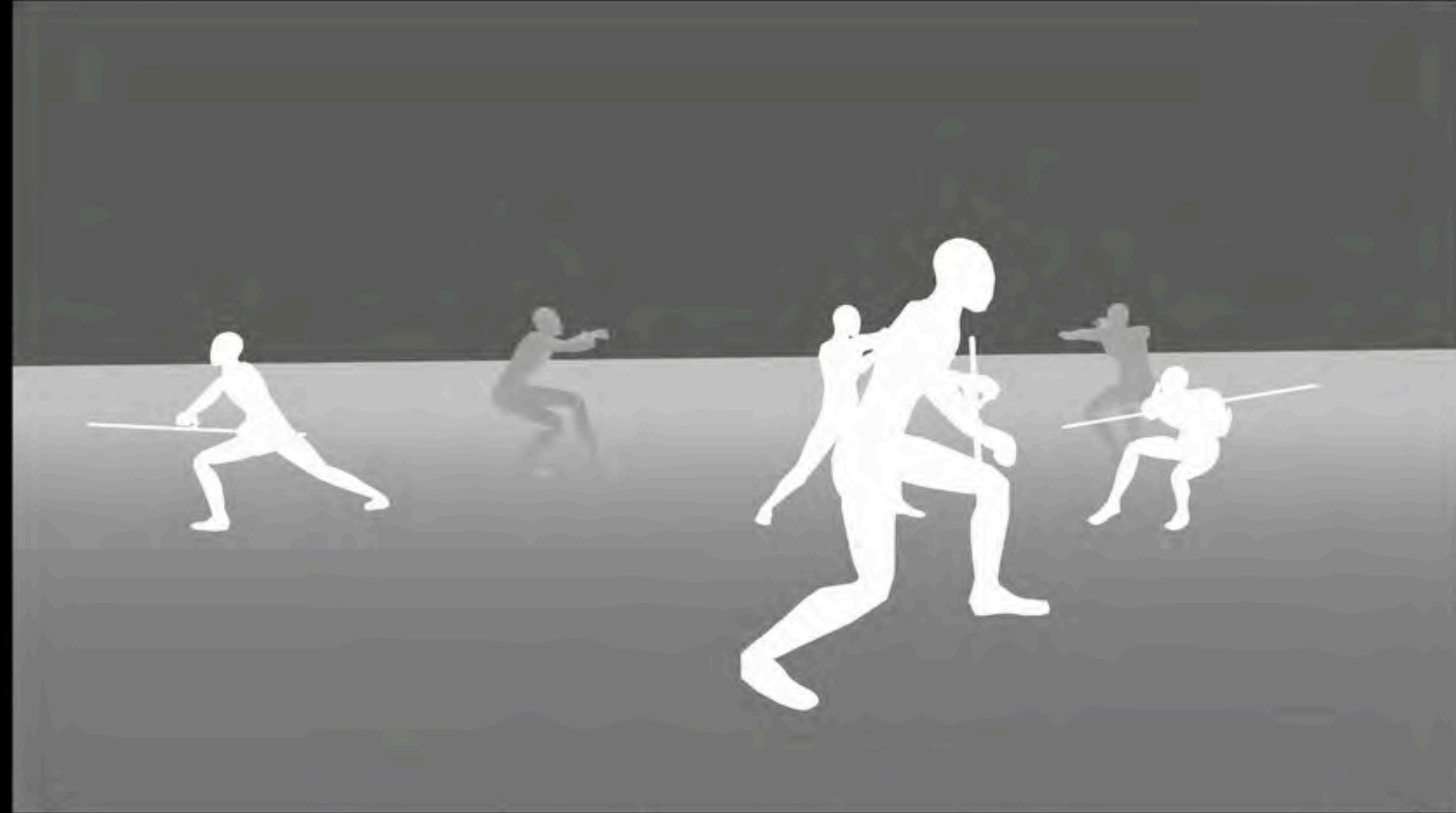
中華民國二十一年
五月一日

虎鶴
林祖

虎鶴
林祖







The Martial Arts ontology: Kinesthetic framework
 IRI: <http://crossings.github.io/ont/martialmotion>
 Authors: <https://orcid.org/0000-0002-8272-908X>
 Other visualisation: [Ontology source](#)

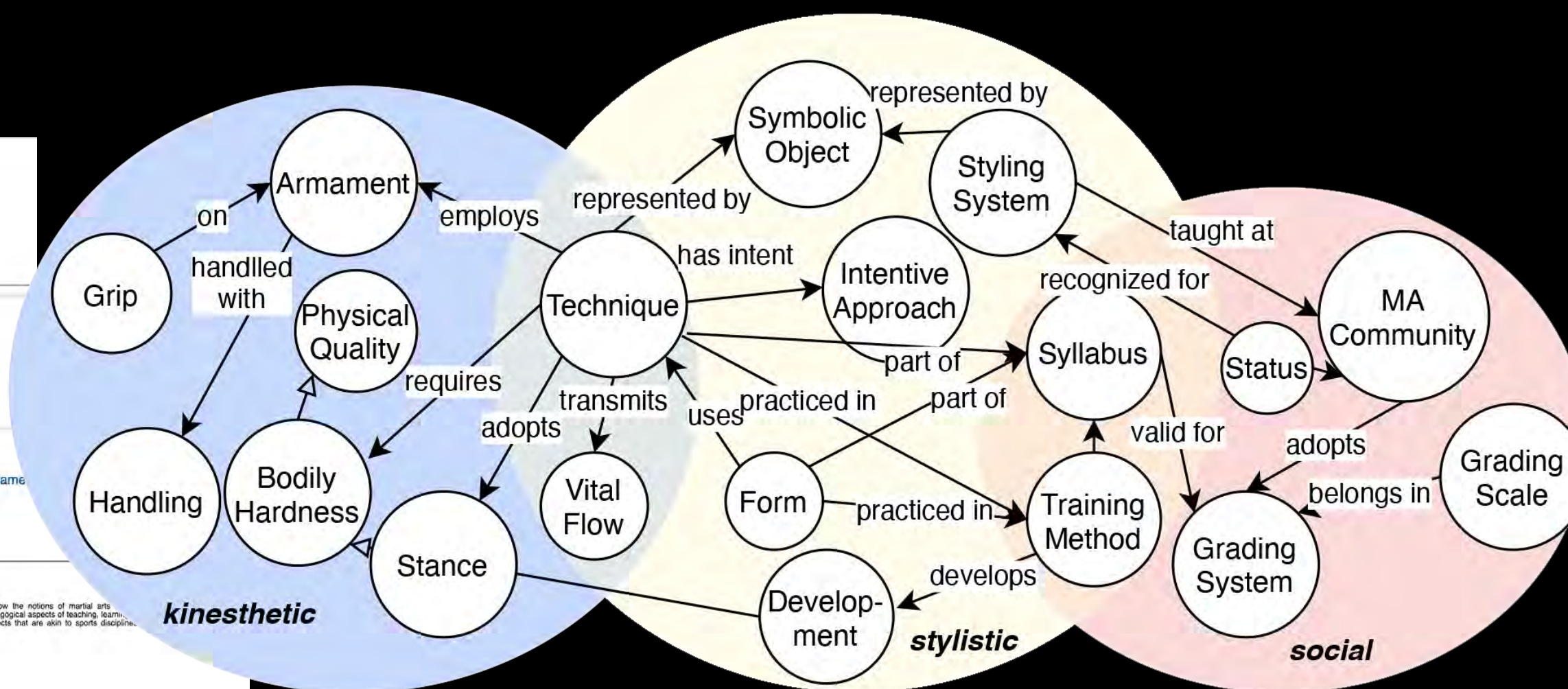
The Martial Arts ontology: Stylistic framework
 IRI: <http://crossings.github.io/ont/martialstyle>
 Authors: <https://orcid.org/0000-0002-8272-908X>
 Other visualisation: [Ontology source](#)

The Martial Arts ontology: Social frame
 IRI: <http://crossings.github.io/ont/martialsoc>
 Authors: <https://orcid.org/0000-0002-8272-908X>
 Other visualisation: [Ontology source](#)

Classes
[armament](#) [bodily hardness](#) [vital flow](#) [stance](#)

Classes
[armament](#) [bodily hardness](#) [vital flow](#) [stance](#)

Classes
[development](#) [grading system](#) [martial arts community](#) [syllabus](#)





嶺南

電影 • 社群 • 百年嶺南洪拳

LING - NAN
HUNG - KUEN
ACROSS
THE CENTURY

KUNG FU NARRATIVES
IN HONG KONG CINEMA
AND COMMUNITY

客家 功夫

300 YEARS OF
HAKKA KUNG FU



DIGITAL VISION OF ITS
LEGACY AND FUTURE

數碼時代中的文化傳承

FOR THREE HUNDRED YEARS, THE HAKKA JOURNEYED FROM THEIR HOMETOWN IN EASTERN GUANGDONG TO THE HEART OF THE LINGNAN REGION. THROUGH THE LENS OF TRADITIONAL AND NEW MEDIA, THIS EXHIBITION INVITES THE AUDIENCE TO LOOK INTO THE PAST AND MEDITATE ON THE FUTURE.

轉瞬三百年，從粵東到嶺南腹地，見證嶺南客家人的遷徙史。是次展覽，透過傳統與新媒體，透視傳統武術精神，追本溯源，洞悉未來。

27 OCTOBER 2016 -
4 JANUARY 2017

二零一六年十月二十七日
至二零一七年一月四日

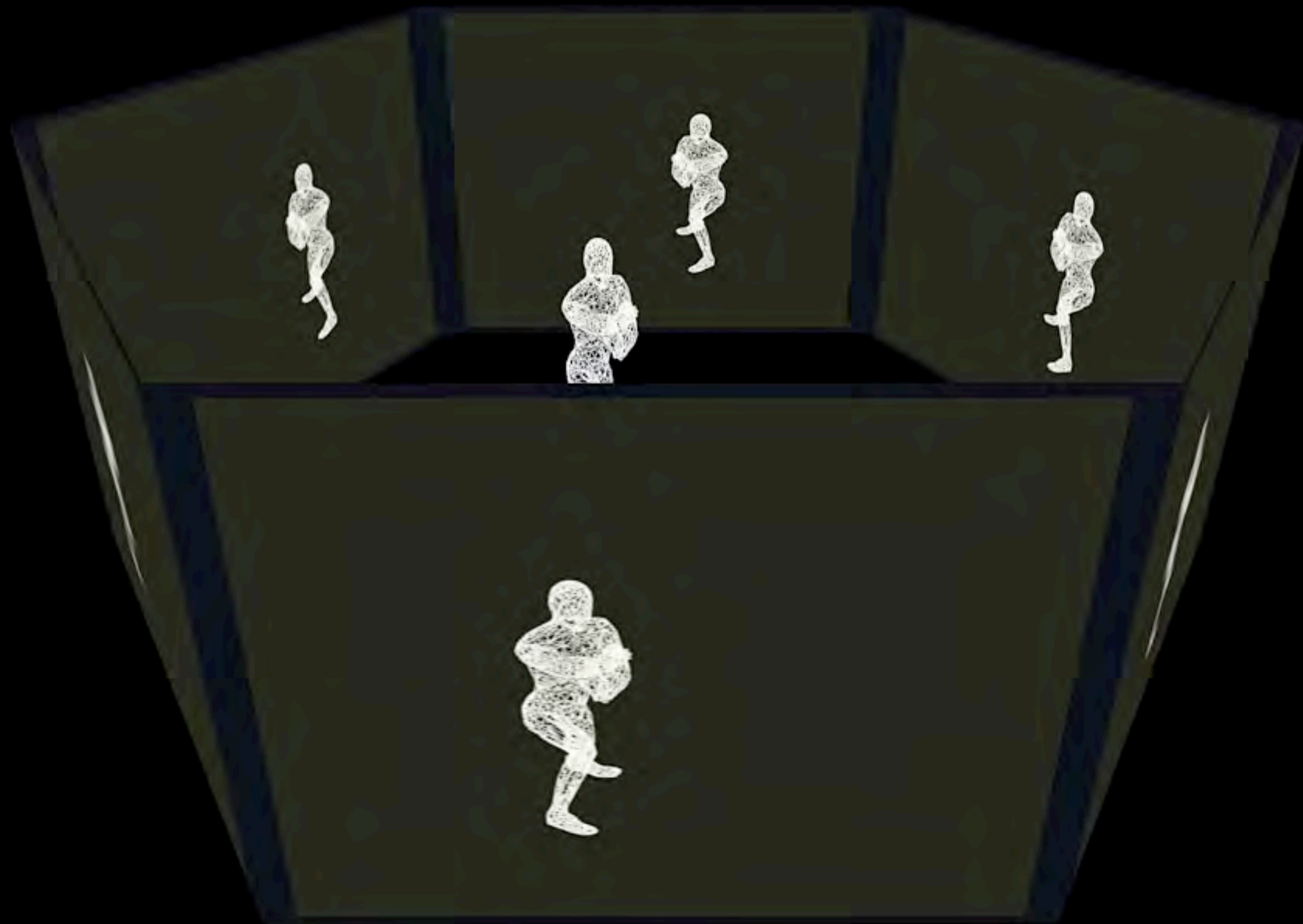
18/F, ACADEMIC 3, CITY UNIVERSITY OF HONG KONG,
KOWLOON TONG, HONG KONG
香港九龍達之路
香港城市大學學術樓(三)十八樓

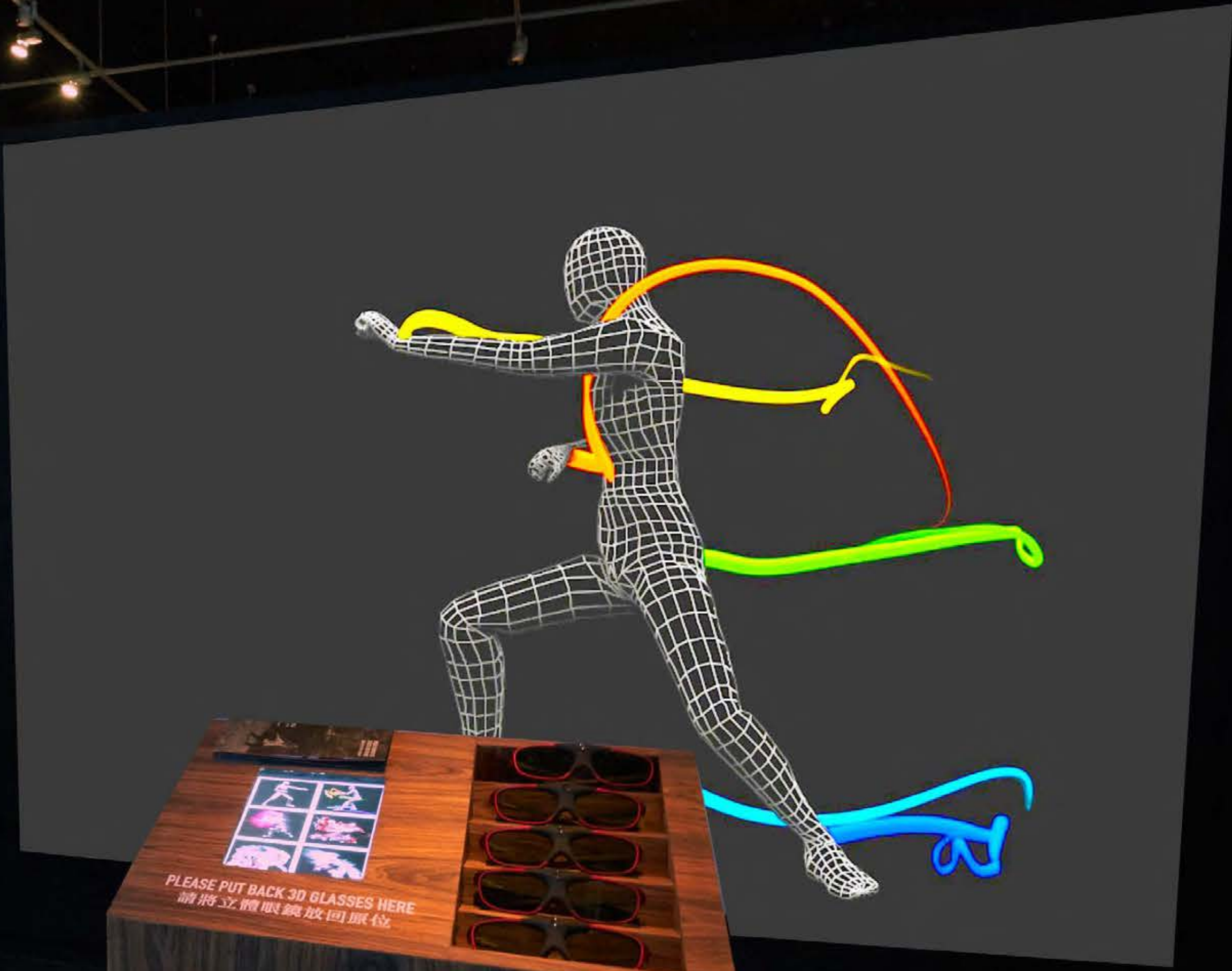
OPENING HOURS:
DAILY: 10AM - 7PM
CLOSED ON MONDAYS

開放時間:
每天上午十時至下午七時
逢星期一休展

WWW.HAKKAKUNGFU.COM







PLEASE PUT BACK 3D GLASSES HERE
請將立體眼鏡放回原位





動作分析の重要性
運動パフォーマンスを向上させるためには、動作分析が不可欠です。動作分析は、動作の効率性を評価し、パフォーマンスを向上させるための重要なツールです。動作分析は、動作の効率性を評価し、パフォーマンスを向上させるための重要なツールです。

動作分析の重要性
動作分析は、動作の効率性を評価し、パフォーマンスを向上させるための重要なツールです。動作分析は、動作の効率性を評価し、パフォーマンスを向上させるための重要なツールです。

